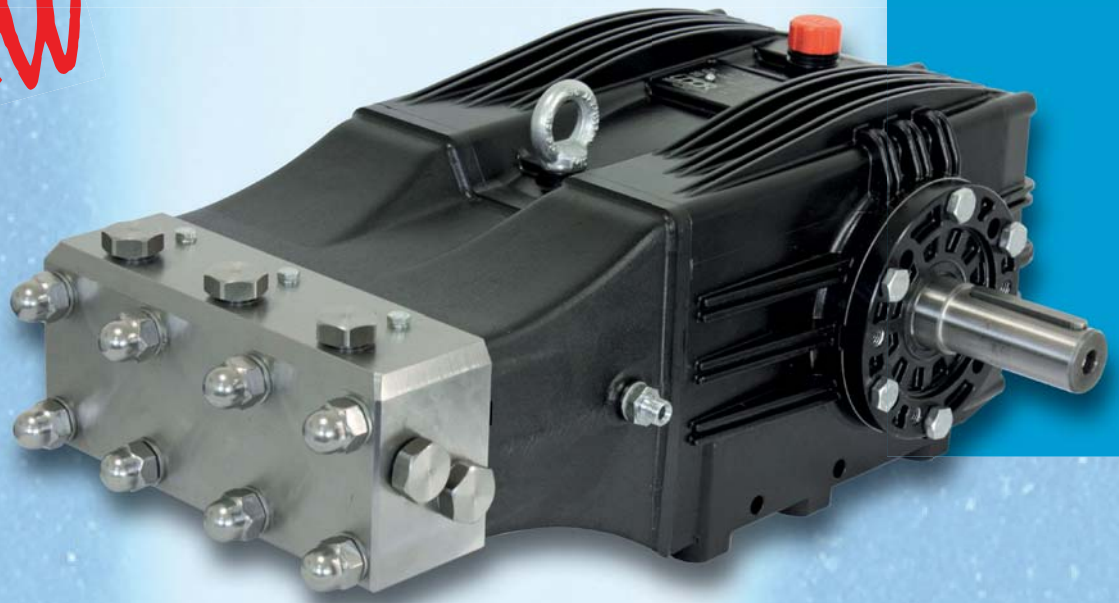


NEW



RPM	MODELLO MODEL	PORTATA FLOW		PRESSIONE PRESSURE		POTENZA POWER		PESO WEIGHT	R = Presa di Forza Destra R = Right PTO Shaft L = Presa di Forza Sinistra L = Left PTO Shaft
		l/min	GPM	bar	PSI	HP	kW	Kg	
1000	VY-B 15/1000 R-L	14.6	3.9	1000	14500	37.5	27.6	58	
	VY-B 20/800 R-L	20.0	5.3	800	11600	41.0	30.1	58	
	VY-B 20/1000 R-L	19.5	5.2	1000	14500	50.1	36.8	58	
	VY-B 25/800 R-L	24.5	6.5	800	11600	50.2	36.9	58	
1200	VY-F 15/1000 R-L	15.0	4.0	1000	14500	38.4	28.3	58	
	VY-F 20/800 R-L	20.0	5.3	800	11600	41.0	30.1	58	

Dimensioni d'ingombro (mm) - Overall Dimensions (mm)

